



hiow-beorht

[www.hiowbeorht.com](http://www.hiowbeorht.com)

# Gothic Script

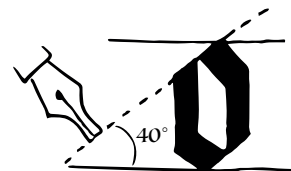


A simple Gothic script for beginners

Once you are comfortable with the basic forms try adding some variations.



\*use corner of pen here



pen angle should be forty degrees.



## essential strokes

all the letters can be made using these three strokes:



down

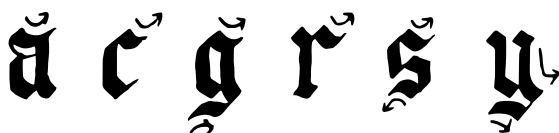


diagonal



across

swishes:



note: the pen only moves down and to the right

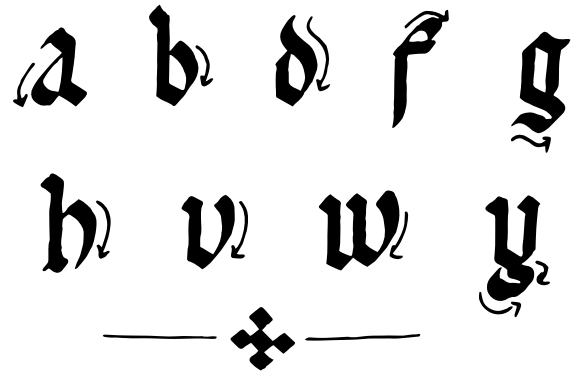


The gothic script dates from the twelfth century and in a basic form

can provide a very good introduction to historic penmanship and a sound foundation with which to start medieval calligraphy.



curves:



old letters:

f - long 's'

ȝ - thorn 'th'

The numbers and arrows indicate the order and direction of the pen strokes

